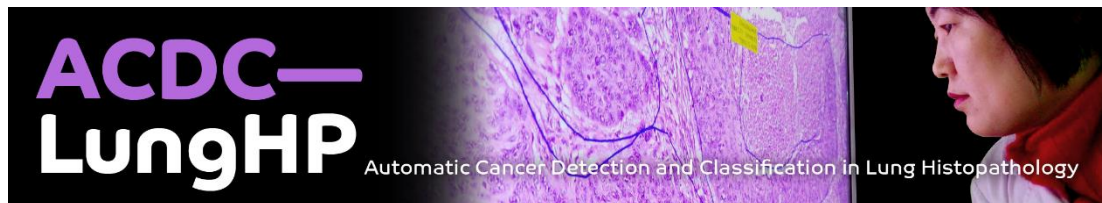
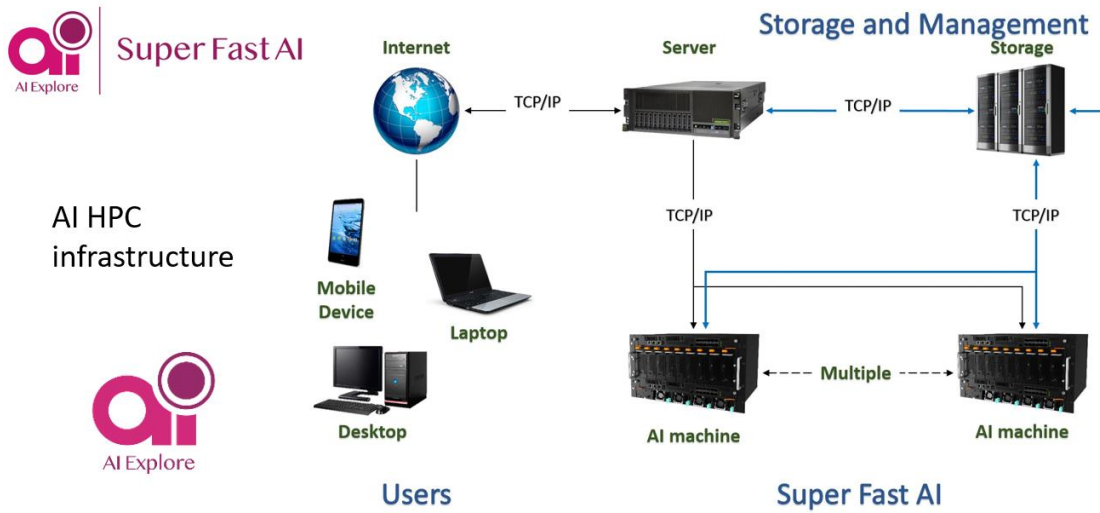


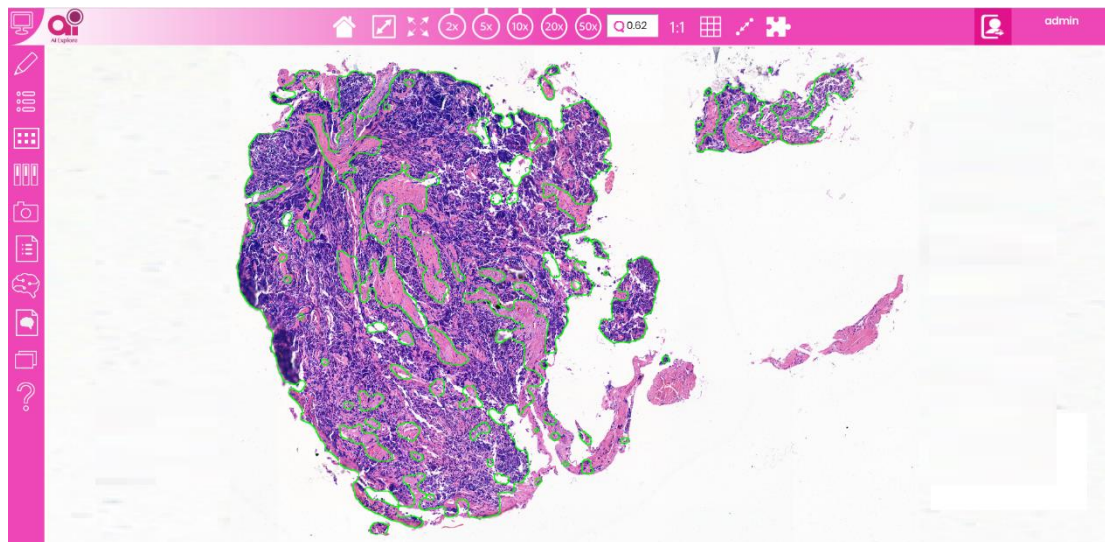
The AI Explore team led by Prof Ching-Wei Wang in the 2019 IEEE ISBI ACDC International Medical Imaging AI Competition defeats 373 teams worldwide (including 49 international AI companies) and winning the eighth place in the world

Professor Ching-Wei Wang's team developed the ultra-high-speed terapixel image AI platform, which analyzes gigapixel whole slide pathological images in seconds. In addition to the amazing speed, its accuracy is outstanding, defeating 373 teams worldwide, including 49 AI company, and outperforms the AI systems by world leading AI teams in the United States, the University of Maryland, Russia SKYCHAIN, London St. Mary's University and other top European and American AI teams. Within only two weeks AI training time, AI Explore system won the world top eighth place in the International AI Competition 2019 IEEE ISBI ACDC Automatic Cancer Detection and Classification in Whole-slide Lung Histopathology challenge





圖一: AI Explore 超高速 AI 運算平台



圖二: 秒速完成全自動判讀肺癌組織於全景域 Gigapixel 病理影像

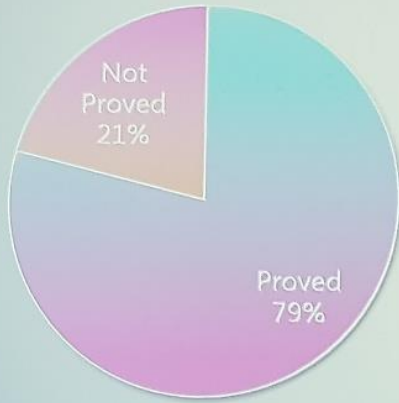
2019 IEEE ISBI 國際 AI 競賽 (威尼斯)

Automatic Cancer Detection and Classification in Whole-slide Lung Histopathology

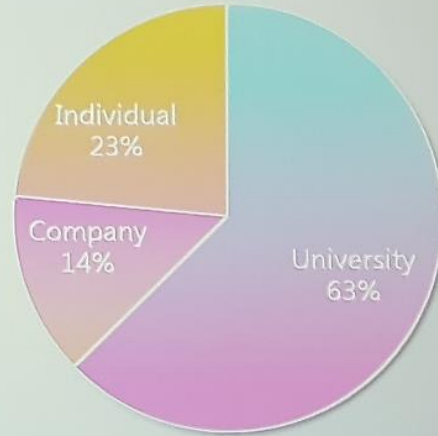
ACDC challenge

# The Challenge Statistic

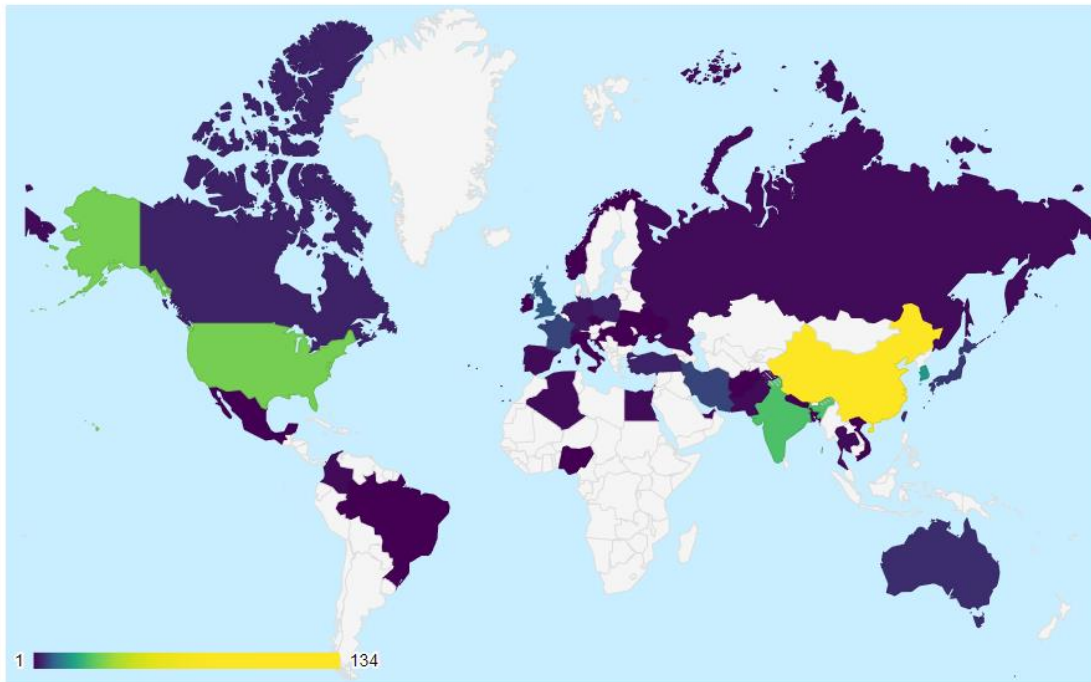
495 applicants



391 Participants



Number of users: 391



## The Challenge Ranking--TOP10

Ranking	Team	Organization
1	PATECH	PINGAN Technology, China
2	byungjae89	Lumit Inc., South Korea
3	Turbolag	北京市住建委, China
4	CMIAS	BUAA, China
5	Arontier_HYY	Arontier, South Korea
6	jorey	BUAA, China
7	newhyun00	Frederick National Laboratory for Cancer Research, USA
8	e42101ex	National Taiwan University of Science and Technology
9	skyusr	Skychain, Russia
10	Vahid	University of Maryland, USA